

VISUAL SPATIAL INSPIRATION

# TOP

## SPACE & ART

顶级空间 艺术与设计

IV



华南理工大学出版社  
SOUTH CHINA UNIVERSITY OF TECHNOLOGY PRESS

· 广州 ·

ARTPOWER 深圳市艺力文化发展有限公司  
Artpower International Publish Co., Ltd.



# OLIVOCARNE RESTAURANT



It was my intention, when designing new Mauro Sanna's venue in London (now the fifth one I designed for him), to narrate about Sardinia (Mauro's as well as my home island) through iconographic references to the main points of its traditional economy (sheep farming and handicrafts (weaving, in this case)) and the quotation of the works of a Sardinian contemporary artist, Eugenio Tavolara, who remarkably contributed, along his whole lifetime, to bring out and safeguard our traditional culture. Far from wishing to evoke Sardinia through

trite images good for low cost tourism, my tale has been told with a language which winks at contemporary design, also resorting to the work of some skilled Sardinian artisans, like sisters Stefania and Cristina Arlu who have moulded a huge terracotta made bas-relief evoking a flock of sheeps, and Mauro Angius who has given life to a crowd of peasants, horsemen, shepherds, wild boars and hunters which animate the restaurant's walls, in a sort of imaginary gallery evoking Sardinian country life. 🐏

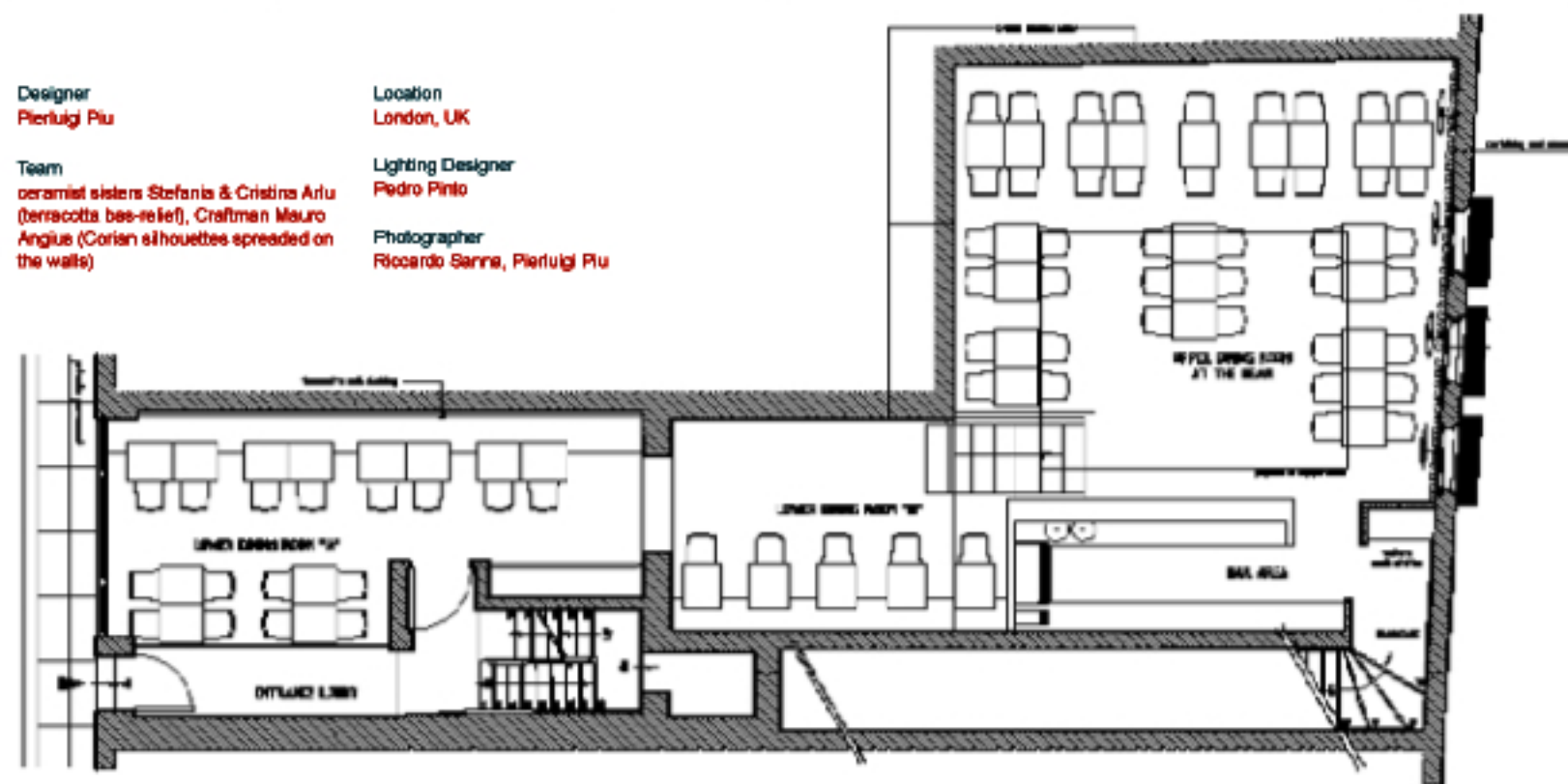
**Designer**  
Pierluigi Piu

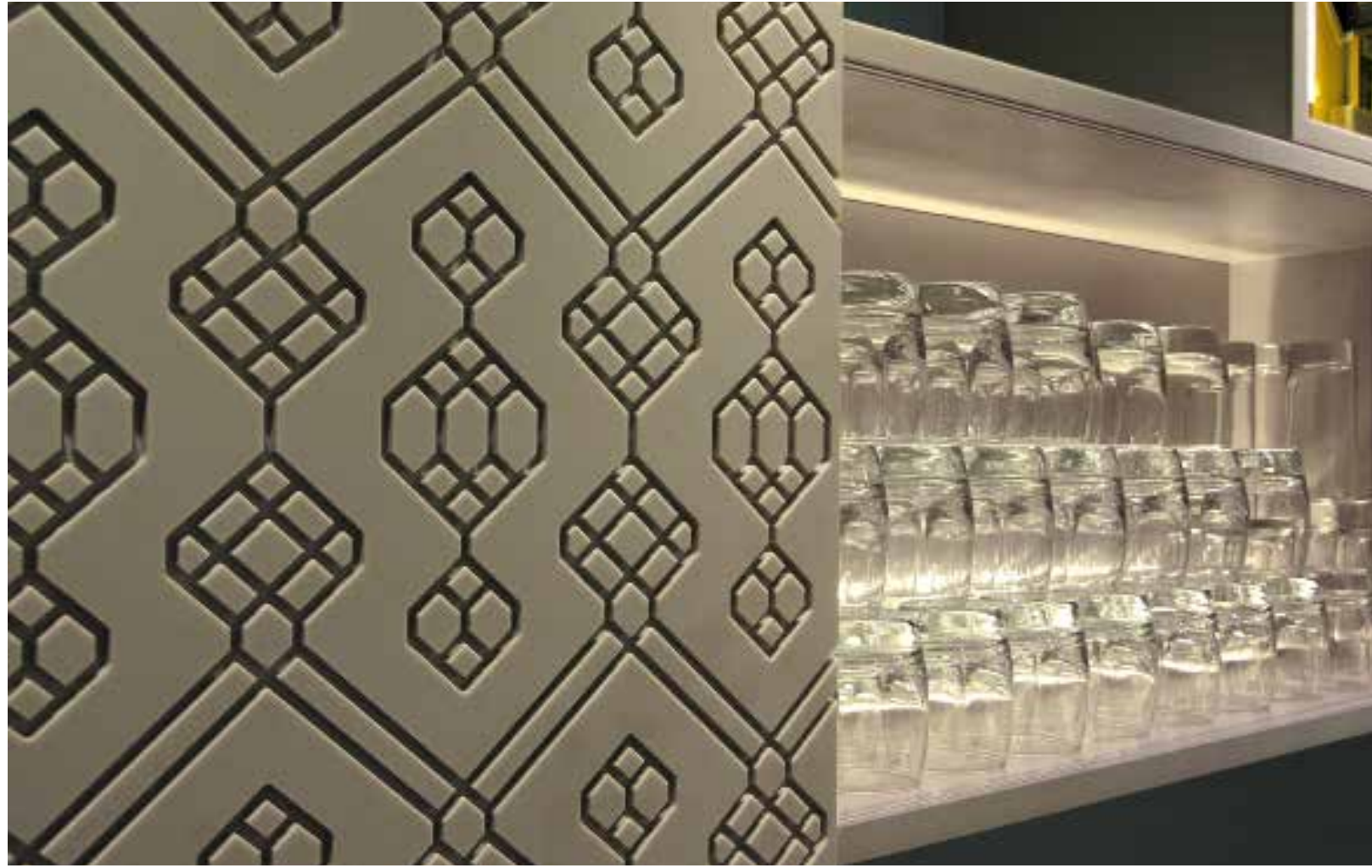
**Location**  
London, UK

**Team**  
ceramist sisters Stefania & Cristina Arlu (terracotta bee-relief), Craftmen Mauro Angius (Corisan silhouettes spreaded on the walls)

**Lighting Designer**  
Pedro Pinto

**Photographer**  
Riccardo Sanna, Pierluigi Piu









## MET Studio



MET Studio celebrates its 30th year in business in 2012. It was originally set up in 1982 by its Chairman and founder Alex McCuaig, taking its name from the Metropolitan Wharf in London where the company's first design studio was sited.

The company enjoys a global reputation, with a lengthy list of highly-acclaimed masterplanning, museum, exhibition, visitor centre, zoo, special event, retail, AV and branding projects, created for corporate clients such as Cunard, De Beer, Virgin, Lucent, Swire, Hongkong Telecom, Portugal Telecom and The Wellcome Trust, as well as non-corporate clients including The Dutch, Irish and Macau Governments, the local councils of Hull and Birmingham and the London Borough of Southwark, as well many national museums around the world. MET Studio has won or been a finalist in 65 individual awards and a winner of over 30 awards since the company began, including some of the world's most prestigious business and design awards, such as The Queen's Award for Enterprise and the Business Link Exporter of the Year Award, as well as being a winner at The Museum of the Year Awards, The DBA Design Effectiveness Awards (which measure the tangible results of design) and taking Design Week's top plaudit - the Best of Show Award - for the best design of any kind in a 12-month period.

The company has offices in London and Hong Kong.

## Minas Kosmidis



Studio Minas Kosmidis [Architecture In Concept] is the evolution of the architect's private studio and its relocation, in 2007, from Komotini to the city of Thessaloniki.

Architect Minas Kosmidis graduated from the School of Architecture of the Aristotle University of Thessaloniki in 1988 and in 1991 he completed his postgraduate studies in "Industrial Design", with a scholarship from "EOMMEX", at the École d'Architecture de Paris-Conflans in the department of "Étude et Creation de Mobilier". During his Master studies he worked together with architect & designer Galeriste Lamia Hassanæin, in Cairo and Paris.

In 1993 he establishes his architectural studio in the town of Komotini, with operations around Greece. The studio undertakes private projects, both housing and professional, with a specialization in the area of dining

and entertainment establishments.

Using the abstraction, the neatness of lines, the clarity, the transparency, the symmetry, the flow, the balance of volumes, the elements of nature and the light as tools, he is inspired to create unique projects, which combine full functionality and unique aesthetics.

The studio's projects have been published in many architecture, interior-design magazines and websites in Greece and abroad.

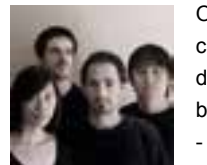
## NAU | Architecture & Design



NAU is an international, multidisciplinary design firm, spanning the spectrum from architecture and interior design to exhibitions and interactive interfaces. As futurists creating both visual design and constructed projects, NAU melds the precision of experienced builders with the imagination and attention to detail required to create innovative exhibits, public events and architecture.

NAU has quickly garnered recognition as an accomplished creator of fashionable interiors for retail, hotels, restaurants and residences. Its dedicated teams offer a personal touch, working with clients to align design approach with the appropriate market. Distilled in clear, contemporary forms, the designs of NAU promote modern, flexible solutions that engage and welcome.

## Outofstock Design



Outofstock is an international collective of award-winning designers based in Singapore, born out of a meeting in Stockholm - hence the name Outofstock.

Gabriel Tan and Wendy Chua from Singapore, Gustavo Maggio from Argentina and Sebastián Alberdi from Spain met at Electrolux Design Lab, Stockholm, in 2005. What started out as a cross cultural creative experiment grew into a design studio with offices in Singapore and Barcelona. They currently work on furniture, industrial design and interior design for international clients such as Ligne Roset, Environment, Quantum Glass, and Discipline.

Their accolades include Elle Decoration Spain's Young

Designer of the Year 2008, the Singapore Furniture Design Award 2009 open category first prize and the President's Design Award 2010, Design of The Year.

## P-06 Atelier



P-06 Atelier is an international award-winning firm specializing in communication and environmental design on a wide range of scales. Based in Lisbon, Portugal, the studio was founded in 2006 by partners Nuno Gusmão, Estela Estanislau, Pedro Anjos and Catarina Carreira. It has since undertaken a variety of projects from complex, large scale wayfinding systems, museum and exhibition design, to communication and editorial design for the printed page, with a bold, striking style that has garnered a number of distinctions. P-06 Atelier actively engages in collaborations with architects, urbanists, landscape designers and engineers, in a continuous, seamless workflow with complementing disciplines, enriching the firm's scope of work and amplifying every intervention's outcomes.

## Pierluigi Piu

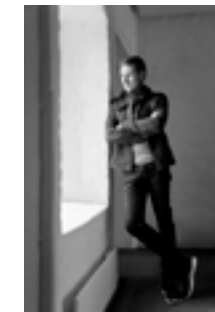


Pierluigi Piu was born in Cagliari (Sardinia, Italy) in 1954 and pursued his studies at the University of Architecture in Florence. He opened his own office and began working in the field of interior design and architecture in 1991. Then, from

1996 until 1998, he was back in Bruxelles, where he had been summoned by the architect Steven Beckers to collaborate on a project for the reconstruction and refurbishment of the Berlaymont Palace, the historic seat of the Council of Ministers of the European Community, and so undertook the supervision and coordination of the aesthetic and formal language for the interior design of the entire building.

He has won many awards, including the "Russian International Architectural Award 2007" in Moscow, the "International Design Award 2008" in Los Angeles, the "Archi-Bau Design Award 2009" in Munich, Germany, the "Compasso d'Oro 2011" in Rome and the "Premio IED" award from the international school Istituto Europeo di Design in 2012.

## Reiulf Ramstad Arkitekter



Reiulf Ramstad Arkitekter (RRA) is an independent architectural firm with a high level of expert knowledge and a distinct ideology. RRA plays a leading role (in Norway) within its field. The office has a strong conceptual approach combined with experience from past accomplished projects. Over the years

the office has produced a wide range of innovative and ground breaking projects and has experienced the overall process, from the first concept phase to the completion of high quality projects. The firm has shown a multitude of approaches in solving assignments, both national and international and has received numerous of prizes and awards for their projects.

## Rosan Bosch



As a Dutch-born artist, Rosan Bosch has had an international launch pad for her professional work. She is partly educated at Hogeschool voor de Kunsten,

Utrecht, Holland, and partly at Universitat de Bellas Artes, Barcelona, Spain. Before settling in Denmark, Rosan Bosch has among other places lived in Spain and Belgium for many years. Rosan Bosch now lives in Copenhagen, Denmark, where she has been partner in the art and design company Bosch & Fjord from 2001-2010. The 1st of January 2011 she established Rosan Bosch Studio.

## Salvetti studio



Andrea creates works of art that reflect the themes of nature and the environment using a number of materials and varied techniques paying particular attention to fusion metals. All this from his sculpture and design studio, renovated from an old

jute factory outside Lucca, working closely with young assistants and his wife Patrizia.

He finds his main inspiration from the hills and woods

and the links with the environment where he lives and this puts its mark on the themes and aims of his projects. He is involved at all stages of the creative process, from the initial idea to the realisation of the piece in the workshop, including the descriptions and comments, upholding the tenet that "know-how" guarantees awareness and independence of one's work.

Andrea has been a proponent of "self-production" for some time now and this has allowed him to explore a wide interdisciplinary space. His pieces can be labelled as sculpture and design, touching architecture and cooking, thus creating horizontal links between these varied fields.

## Slade Architecture



Slade Architecture was founded in 2002, seeking to focus on architecture and design across different scales and program types. Their design approach is unique for each project but framed by a continued exploration of primary architectural concerns.

As architects and designers, they operate with intrinsic architectural interests: the relationship between the body and space, movement, scale, time, perception, materiality and its intersection with form. These form the basis of our continued architectural exploration.

Layered on this foundation, is an inventive investigation of the specific project context. Our broad definition of the project context considers any conditions affecting a specific project: program, sustainability, budget, operation, culture, site, technology, image/branding, etc.

Working at the intersection of these considerations, they create designs that are simultaneously functional and innovative.

They have completed a diverse range of international and domestic projects and their work has been recognized internationally with over 200 publications, exhibits and awards. The awards, publications and exhibits are a welcome recognition. However, they strive to create work that speaks for itself.

## Softroom Architects



Softroom Architects have developed a reputation for design excellence, creative innovation and skilful delivery. Recent projects have seen the practice working on large-scale and international schemes of increasing size and complexity.

Founded in 1995, the company is led by two directors, Christopher Bagot and Oliver Salway, backed by an enthusiastic and committed team. Work by the practice has been published and exhibited worldwide.

Softroom have worked on a wide spectrum of projects including buildings, bridges and interiors for public, educational, residential, retail and commercial uses, transport and exhibition design. Working with a broad range of brands, public and private clients have resulted in a portfolio that is regarded as both stylish and imaginative.

Softroom have received many accolades during their career, including RIBA awards, the Stephen Lawrence Prize, 'Building of the Year' from the Royal Fine Arts Commission, 'Best in Show' from Design Week and prestigious 'Yellow Pencils' from D&AD.

## Spatial Ops



Spatial Ops is an intermittent collaborative between Steven Christensen Architecture and Anya Sirota / AKOAKI. Informed by the team members' diverse backgrounds in architecture, photography, psychology, and film, their work explores the relationship between space, media, and perception. The team is based in Los Angeles and Ann Arbor, and includes faculty from the UCLA and the University of Michigan. Their tactical design interventions seek to catalyze conversations about the relationship between urbanism, individual liberty, and contemporary culture.