

Pierluigi Piu

Olivomare & Olivino Delicatessen Shop

London, UK

Olivomare is a seafood restaurant belonging to the well-known London brand Olivo. Italian designer, Pierluigi Piu, has given the restaurant a formal and decorative language which makes clear references to the sea world.

The most explicit of these references is undoubtedly the long wall in the main dining room, entirely covered by a pattern inspired by the works of visionary artist, Maurits Escher. Each single portion of color is laser cut out of a sheet of opaque laminated plastic and then juxtaposed on the vertical surface as if it were a huge jigsaw puzzle. In the same room and as a counterpoint to this, tubular luminescent "tentacles" create a linear sequence of spirals and twists of tubular nylon mesh evoking a stray shoal of jellyfishes, while the glazed partition dividing this room from the entrance lobby could be perceived as fishing nets. This space offers access to both the restaurant and upper floors through a huge panel split into smaller mobile and fixed ones.

In the small dining room at the rear (flooded by natural daylight due to a large skylight), the cladding of its only continuous wall is characterized by a wavy relief designed to evoke the sandy surface of a beach when molded by the wind. This surface has been finished with a special paint performing a "peach skin" effect. In order to emphasize the sculptural quality of such moldings, a continuous linear light has been recessed into a gap in the ceiling.

On one of the few smooth walls of this room, a flush door leads to the toilet lobby, where the branches of a coral reef wind their way around the walls and ceiling surprising and momentarily disorientating visitors. This decorative pattern was achieved by engraving a double layer of thick opaque laminated plastic glued onto the walls and ceiling.

Immediately next door to the restaurant is Olivino, a delicatessen owned by the same company, which shares the aubergine colored shop front, as well as a similar design style. The left-hand wall boasts a decorative pattern of bottles and wine glasses, highlighting the main product sold here, i.e. wine. On the opposite side there is a system of overhanging shelves, while a custom-made fridge counter constitutes the shop's centerpiece. This features a lower section covered with white Corian, an upper glazed showcase equipped with sliding display trays and a work top made from solid "afrommosia" wood, three sides of which have been squared, while the fourth one has been left untreated.

Photographs:

Giorgio Dettori

Restaurant

OLIVOMARE

Client:

Oliveto & Olivo Ltd.

Structural engineer, planning permissions:

Michael Blacker partnership

Light consultant:

Isometrix

Main contractor:

ZIBI & JACK

delicatessen shop

OLIVINO

Client:

Oliveto & Olivo Ltd.

Structural engineer, planning permissions:

Michael Blacker partnership

Light consultant:

Isometrix

Main contractor:

ZIBI & JACK

Air conditioning:

FLORIO Refrigeration

Fire alarm and CCTV system:

M&M ELECTRICAL

Decorated claddings, refrigerated counter,

shelves:

IFAS Tasselli

Resin floor:

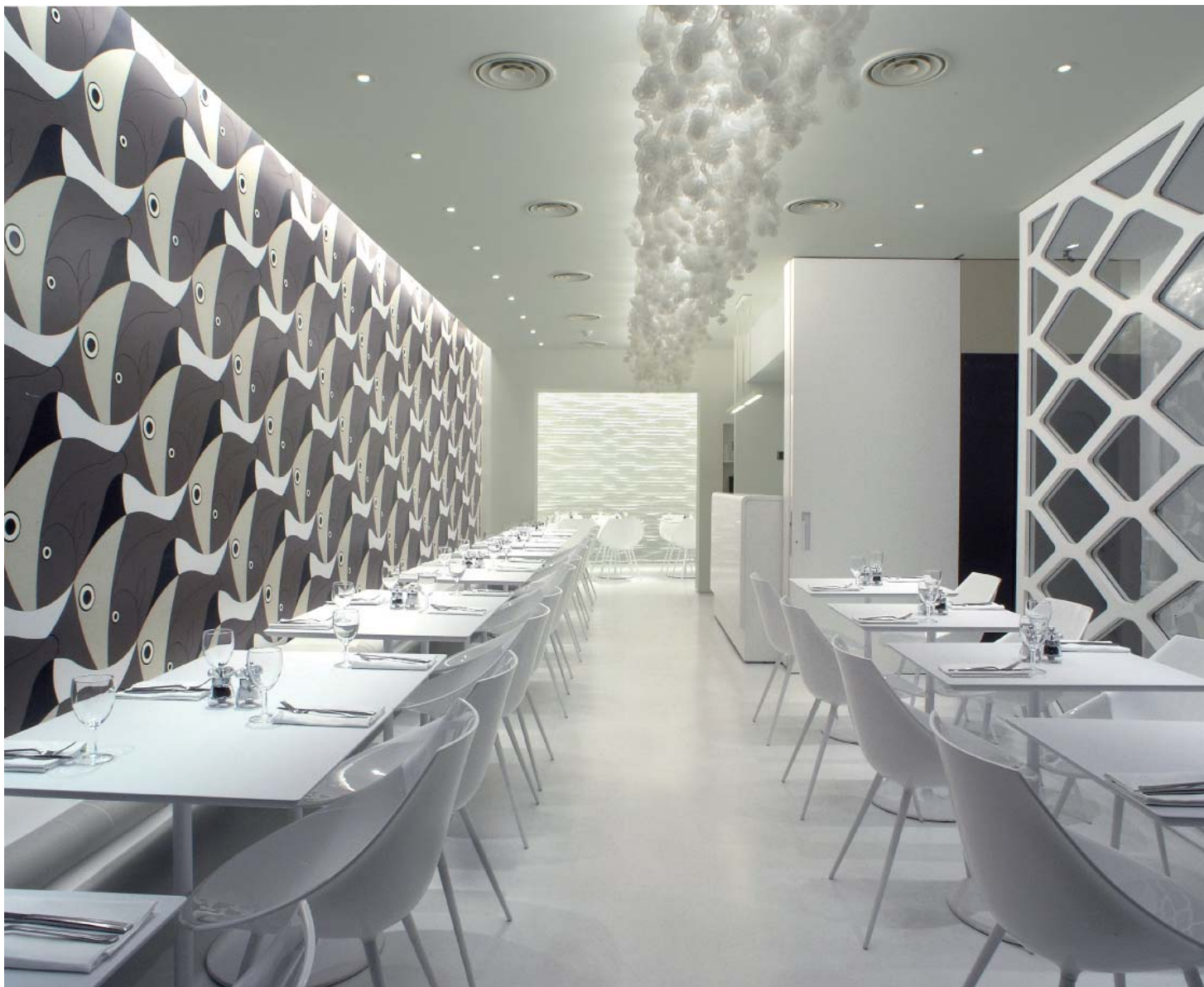
LASERCROFT

Awning:

FLAMINGO Blinds & Fabrics





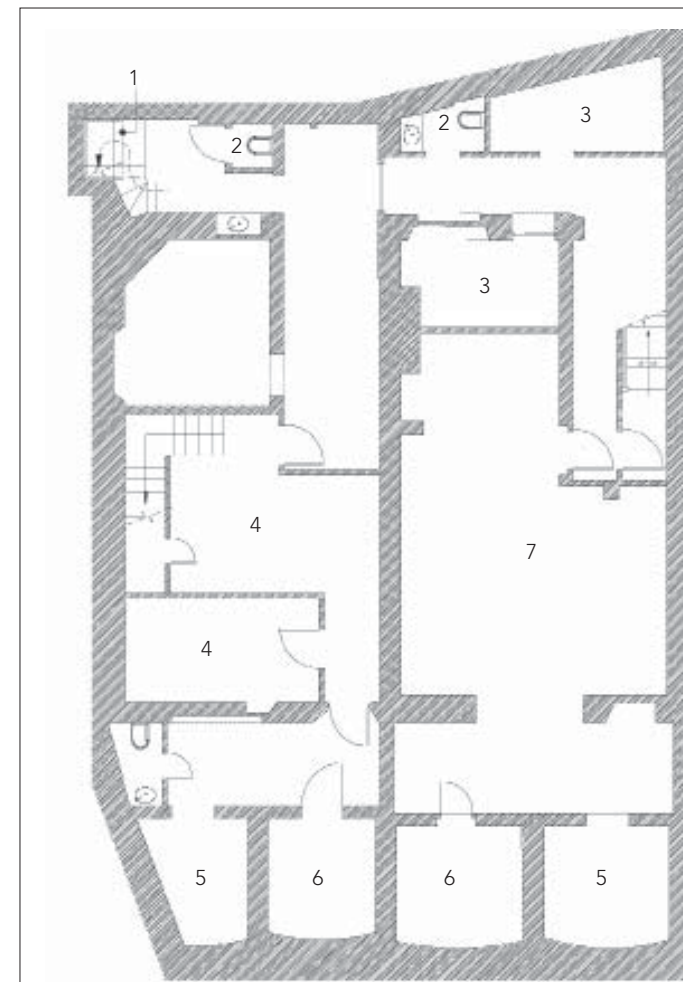


A sea of white in the restaurant has been used to enhance and link all these elements together, flooding all surrounding parts from the resin floor to the Corian-made bar counter. The whiteness intentionally disappoints any predictable expectation for blue here.

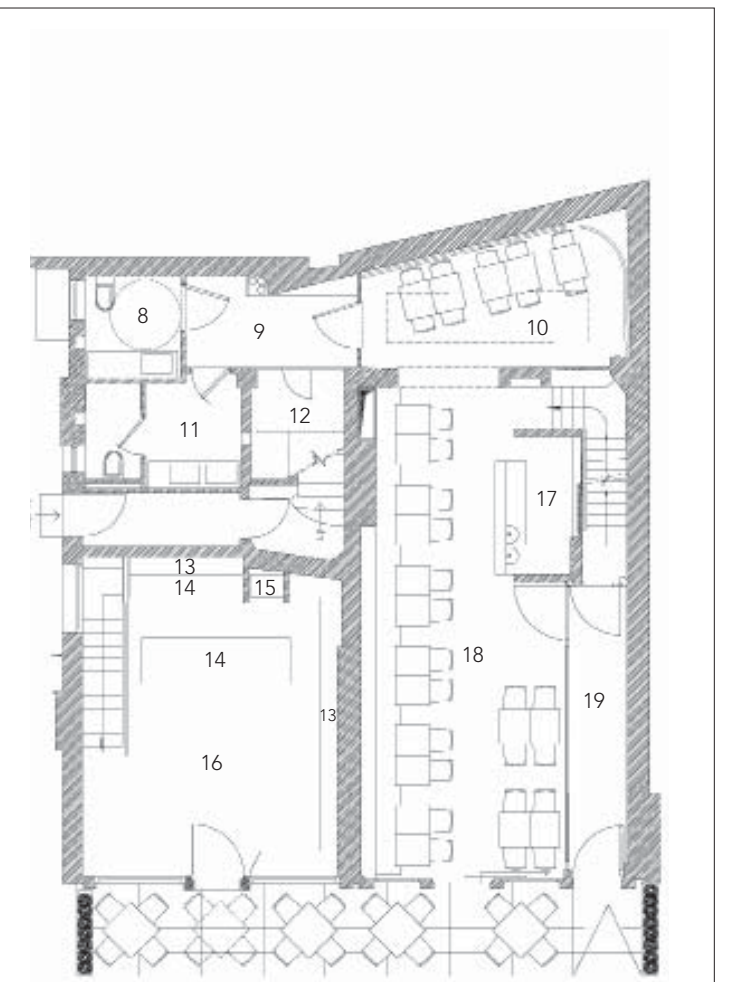




Nine holes in the side of the white, Corian-made bar counter, are used by the staff to hold a stock of cutlery.



- 1- Acces hatch at ground floor
- 2- Staff's toilet
- 3- Changing room
- 4- Store for shop
- 5- Dry store
- 6- Cold store
- 7- Kitchen
- 8- Males' & disableds' toilet
- 9- Toilets' lobby
- 10- Dining area



- 11- Ladies' toilet
- 12- Storage
- 13- Shelf
- 14- Refrigerated counter
- 15- Fridge
- 16- Shop
- 17- Bar area
- 18- Restaurant's dining area
- 19- Entrance lobby
- 20- Private pavement



